



Recreation + Open Space Refresh

ELIZABETH PARK, TOWN OF PARADISE, NL

FEBRUARY 2022



Contact Information:

Neil Dawe

100 LeMarchant Road

St. John's, NL A1C 2H2

P. 709.682.2175 F. 709.738.2499

ndawe@tractconsulting.com

www.tractconsulting.com



Table of Contents

1. Introduction	1
2. Project Setting, Inventory + Trends	5
Project Setting	6
Town of Paradise	6
Elizabeth Park	7
Existing Parks & Open Space	10
Best Practices + Trends	19
Placemaking	21
3. Public Engagement	23
Public Engagement Planning	24
Engagement Plan	25
Communications Plan	26
Staff + Resident Sessions	27
Jane’s Walks	27
Community Survey	30
Elizabeth Park Refresh Project — FORUM	32
Key Discussion Comments	32
Mapping Exercise	33
Child + Youth-oriented Engagement	34
Materials Provided by Tract	34

4. Recommendations + Implementation	45
Existing Neighbourhood Connectivity	47
Recommendations Streets + Bike Lanes	50
Proposed Bike Lanes	51
Recommendations Parks + Open Spaces	55
Overall Parks & Open Space Recommendations	56
Top Pond Park.....	58
Pump Track Park.....	59
Community Passive Park.....	60
Skate Park & Multi Sports Court.....	61
Nature Play Park.....	62
Elizabeth Park Elementary School Outdoor Classroom.....	64
Middle Pond Park	66
Playground & Skills Park.....	68
Wetland Park.....	70
Phased Implementation + Costing	71
Implementation Summary	72
Cost Summary.....	74

1

Introduction



Phase One: Project Setting, Inventory and Trends. This initial phase included the start-up meeting, an inventory of current amenities, including open space in Elizabeth Park, and information gathering/review. The information gathering/review included a review of the Town’s Strategic Plan and Open Space Master Plan, a review of the Town’s demographic profile, an identification of emerging trends and best practices in recreation and open space, an identification of “outside the box” alternatives to traditional uses, and a review of how placemaking concepts could be used to create a sense of pride among residents.

Phase Two: Public Engagement. During this phase a public engagement and communications plan was developed. Various consultation mechanisms were proposed to inform and engage key stakeholders, user groups and residents regarding recreation/open space needs and ideas for development in Elizabeth Park.

Phase Three: Final Report, Recommendations and Implementation: This is the most complex component of the work. During this phase the information and findings from Phases One and Two were analyzed; gaps, overlaps and deficiencies with respect to current amenities and open spaces identified; recommendations for development/improvement prepared; and the alignment/contribution of the recommendations with overall Town goals identified. These recommendations are costed and formatted into a multi-year implementation plan.

Appendices provides more detailed information on topics covered in the document. Implementation of the recommendations will allow diverse and inclusive programming, and will result in aesthetically pleasing, functional, sustainable and accessible outdoor recreation amenities.

In Section 2:
Project Setting / Current Amenities / Best Practices + Trends

2

*Project Setting,
Inventory + Trends*

2. PROJECT SETTING, INVENTORY + TRENDS

Project Setting

Town of Paradise

Paradise is a progressive, expanding community with a bright future. Since its incorporation in 1971, it has experienced continuous growth. In the 2000s particularly, it experienced unparalleled expansion, becoming the fastest growing town in the Atlantic Provinces (from 9,600 people in 2001 to 17,695 in 2011, growth of approximately 84% in a single decade). The current population is approaching 23,000.

Located just minutes from the Capital City of St. John's, the Town offers a wide variety of residential neighborhoods, providing easy access to work, shopping, recreational and cultural attractions, hospitals, and educational institutions. It is currently home to an energetic community with four elementary schools, and a new junior high school, a youth and community center, double ice surface arena, numerous neighborhood parks, sports facilities,



walking trails and public transit route. The Town boasts a vibrant and growing business community encompassing both small and large businesses with a large growing industrial park.

The Town of Paradise Municipal Government is progressive with a concentration on substantial and sustainable growth while ensuring that the Town achieves the vision outlined in its Strategic Plan (2019) “Your Paradise – creating a thriving, well-balanced community together”.

The Municipal Government has committed to a planning culture to ensure that it achieves its vision. In its recent Strategic Plan (2019), Council made a commitment for more public engagement in community development and improvement projects, such as the Elizabeth Park Refresh project. This is reinforced in the new Municipal Plan “Imagine Paradise” (2016) and a refresh of the Economic Development Strategy (2020).

The Town has also prepared a series of master plans including, The Paradise Open Space and Recreation (2019) which outlined the following key considerations that are relevant to Elizabeth Park Recreation and Open Space Refresh:

- Greater diversity of activities
- Connected community
- Improved landscaping
- Covered outdoor spaces (wind, rain, sun protection)
- Low fencing at play areas
- More well-placed seating
- Tot lots underutilized; improve safety, quality + functionality

Elizabeth Park

Elizabeth Park subdivision including Evergreen Village, was amalgamated with the Town of Paradise following dissolution of the St. John’s Metropolitan Board in 1992. Older sections of Elizabeth Park subdivision, such as Evergreen Village, were developed in the 1970’s/80’s and has sustained substantial growth since then. The subdivision is currently on Phase 26. Elizabeth Park forms the eastern boundary of the Town and is surrounded on three sides by the City of St John’s.

Elizabeth Park is the most densely populated area of Paradise, with a spatial density of 1092 civics per sq km. With approximately 1637 civic addresses, the area makes up 20% of the Town’s overall dwelling count. Elizabeth Park’s total population of 4,400, or just under 20% of the Town’s total population.

In 2016, Elizabeth Park population was comprised of the following distribution of children/youth (by age):

- **0-4 yrs** — 3.9% or **172**
- **5-9 yrs** — 6.25% or about **275**
- **10-14 yrs** — About 8% or about **350**
- **15-19 yrs** — 6.32% about **278**

The Town provided more detailed information from the 2020 Statistics Canada database, by Dissemination Area.

2020 CENSUS

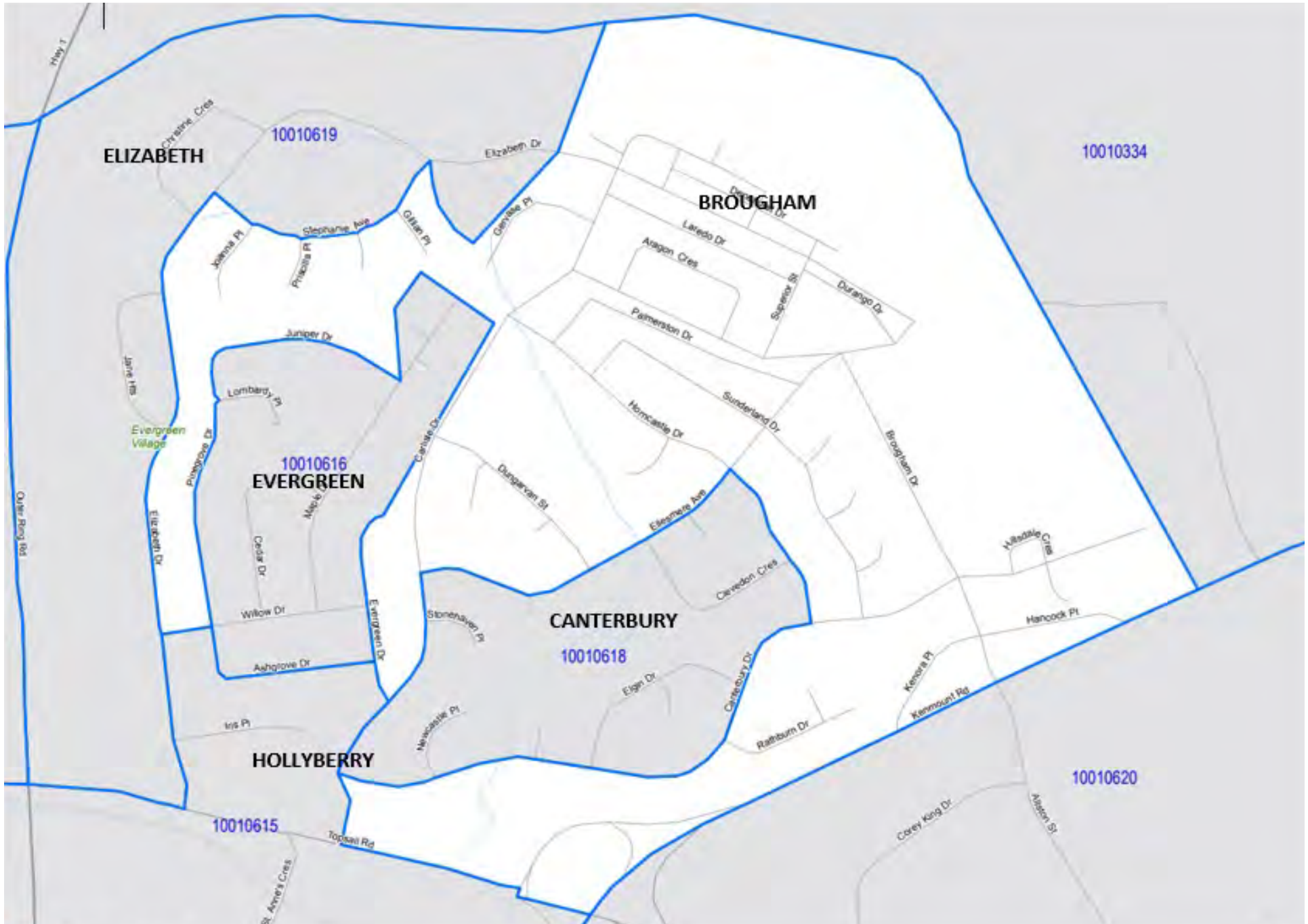
Note: no data provided for 18-24 or over 65 years of age

Dissemination Area	Total Household Population	Children <12 Years Old	12-17 Years Old	25-64 Years Old
Hollyberry*	1298	263	134	688
Evergreen	391	36 (9%)	17 (4%)	236 (60%)
Broughham	2844	429 (15%)	260 (9%)	1700 (60%)
Canterbury	625	72 (12%)	58 (9%)	383 (61%)
Elizabeth	522	48 (9%)	35 (7%)	335 (64%)

* most of Hollyberry is outside Elizabeth Park subdivision

Highlights:

- **Brougham has majority of children** < 12 years and youth (12-17 years);
- **Elizabeth has greatest proportion** (64%) of mature population (>25 years);
- **Elizabeth & Evergreen have least proportion** < 12 years;
- **Evergreen has fewest proportion of youth** (4%);



Existing Parks & Open Space

LEGEND

- Open space
- Neighbourhood parks
- Water
- School
- Trails



Recreational amenities in Elizabeth Park are currently comprised of six playgrounds/tot lots as well as open space and a linear walking trail that runs throughout the subdivision from North to South. At the heart of the Elizabeth Park area is an existing trail and park system that presents great potential for creating connections throughout the neighbourhood, as well as providing space for creative activities for all ages.

The potential of the trail and open space system can be better viewed on the following aerial images:



North end – by the pond



Middle section between Carlisle Drive and Ellesmere Ave and includes Elgin Park



Trail section crossing Canterbury Drive and encompassing wetland (McDonald's Restaurant to the west) on Topsail Road

Existing Parks & Open Space

LEGEND

- 1 Stephanie Avenue Open Space
- 2 Christine Crescent Playground
- 3 Lombardy Place Park
- 4 Horncastle Drive Playground & Open Space
- 5 Elizabeth Park Elementary School
- 6 Elgin Drive Park
- 7 Ashgrove Drive Park
- 8 Canterbury Drive open space



Existing Parks & Open Space Assessment

1 Stephanie Avenue Open Space



- Existing foot path is not a formal trail
- Marshy land with open waterbody on southwest corner
- Good opportunity to connect with the existing central trail system

2 Christine Crescent Playground



- Existing play structures on site
- Access point for motorized vehicles to extensive informal ATV/Mountain bike trails around the perimeter of the community

Existing Parks & Open Space Assessment

3 Lombardy Place Park



- Large centrally located park
- Existing play structures on site
- Existing tennis courts & multi-sports court
- Poor condition overall and in need of upgrades

4 Horncastle Drive Playground



- Existing play structures on site
- Located on a residential corner
- Separated by a creek from the existing trail system
- Good community access by streets

5 Elizabeth Park Elementary School



- Large grass open space that is exposed to strong winds
- Existing play structures on site
- Outdoor eating area on site
- School gardens
- Used by students and residents

Existing Parks & Open Space Assessment

6 Elgin Drive Park



- Existing play structures are in poor condition
- Great natural setting
- Good trail network connections

7 Ashgrove Drive Park



- Existing play structures on site
- Visible and accessible from three neighbourhood streets
- Bike ramps have been constructed in the open space on Ashgrove Drive by local children
- Potential trail connection to the informal trail along Pinegrove Drive

8 Canterbury Drive Open Space



- Existing foot path is not a formal trail
- Steep drop off from the road to the trail, which will make it difficult for accessibility
- Trail used by students to walk to MacDonald's Restaurant
- Marshy land with open waterbody
- Good opportunity to connect with the existing central trail system

The following descriptions and assessments were provided in the 2019 Recreation Master Plan.

Excerpts from Table 3-3 Open Space Assessment Rating Criteria:

Rating: 1=poor and 5=excellent

Name	Programming / Use	Physical Condition				
		1	2	3	4	5
Elizabeth Park Elementary	Play structure, grass lot, outdoor eating area, school garden	[Bar chart showing a rating of 4]				
Lombardy Park	Play structure (2x), swingset, spring toy (3x), tennis court (2x), multi-purpose paved court	[Bar chart showing a rating of 2]				
Horncastle Drive Tot Lot	Play structure (2x), swingset, spring toy (3x), community mailbox	[Bar chart showing a rating of 3]				
Elgin Tot Lot	Play structure (2x), swingset, spring toy (2x), toddler equipment	[Bar chart showing a rating of 3]				
Ashgrove Drive Tot Lot	Play structure (2x), balance beam, swingset	[Bar chart showing a rating of 4]				

Table 3-6 Open Space Categorization by Park Type

#	Name	General Use	Area (ac)	Park Type
1	Elizabeth Park Elementary	Playground, school garden	1.32	Neighbourhood Park
15	Ashgrove Drive Tot Lot	Playground	0.18	Tot-Lot
16	Canterbury Grasshopper Park	Playground	0.12	Tot-Lot
17	Lombardy Park	Playground, tennis, basketball/ball hockey	1.63	Neighbourhood Park
18	Horncastle Drive Tot Lot	Playground, community mailbox	0.31	Tot-Lot
19	Elgin Tot Lot	Playground	0.81	Tot-Lot

The locations of the Open Spaces are shown on the map to the left. As well, the map shows the Elizabeth Park Neighbourhood Trail (1.66 km) with the trail loop in the vicinity of Elgin Park (.26 km).





Best Practices + Trends

The primary **outside the box** alternative approach to traditional planning practices which were applied to the Elizabeth Park Recreation and Open Space Refresh is the child-friendly planning theme. This approach is based upon new trends in urban planning; in particular the ground breaking work of British Planner Tim Gill as outlined in his recent book *Urban Playground – How Child-Friendly Planning and Design can save Cities*. His approach is based upon the idea that a city which is better for children is better us for everyone.

Tract applied the concept of child-friendly planning as an underlying theme to making Elizabeth Park the very best neighbourhood to live, work and play for all residents. We used a selection of tools similar to those which Mr. Gill developed for child-friendly urban planning to augment the public engagement efforts for the Elizabeth Park Refresh Project.

The aim was to see the Elizabeth Park neighbourhood through children's eyes so that we could identify challenges which were perhaps hidden to adults and which offered insights into potential **outside the box** solutions.

Child participation lies at the heart of building a child-friendly community. Their active engagement was essential so that, services and facilities they use reflect and address their concerns, ideas and priorities. Participatory mechanisms were age-appropriate, ethical and adhered to basic quality standards.

Garnering this information relative to Elizabeth Park required creative engagement methods. Tract was successful in securing the cooperation of the Elizabeth Park Elementary School Principal, teachers and students to provide input and preferences.



Child-oriented urban planning is an evolving set of ideas about shaping streets, parks and public spaces so that children are active and visible in urban life. It takes children's views and experiences seriously and aims, through planning and design, to expand their opportunities to play, explore and get around their neighbourhood and the wider city.



Numerous cities have started to seek out feedback from their youngest citizens and plan with children in mind.

Rotterdam, Vancouver and Toronto, which recently released kid-friendly guidelines for high-rise development have created kid-centered design and development guidelines. Oslo spearheaded the development of an app that allows children walking to school to play "secret agent" and report issues with street repairs and heavy traffic, to allow them to have a say in street-level design.

Many cities have, not surprisingly, reaped the benefits of allowing teens to participate in park design, or have created children's design councils to discover how to design for this particular constituency.



Building Blocks integrated into the approach for Elizabeth park Recreation and Open Space Refresh are:

- *Livable Streets*
- *Walking and Cycling Networks and*
- *Playful Public Spaces*

Trails well used by youth.

Placemaking

Tract is a leading advocate for and practitioner of applying placemaking to build community pride and identity.

Some of the placemaking concepts explored included:

- **Mixed Use:** Encouraging social interaction through community scheduled special events and pop-up events.
- **Enhanced Sociability:** Sociability along with access and linkages, comfort and image, uses and activities are the key to successful placemaking and creating places that bring people together in Elizabeth Park.
- **Placemaking with Children:** Inviting children, without the influences of parents, and provide blocks, modelling clay and other design items, to help release creativity so they can express their design ideas for parks and open spaces.
- **Theme Based Park Design:** Integrating the Paradise brand into a design theme for the parks and open spaces is essential.
- **School Park Concept:** Investigating the opportunity with the Eastern School District to create a “High Performance” Neighbourhood School Park.

Emerging trends and best practices related to recreation and open space include creating:

- Connectivity and inclusivity with a focus on walking, bicycling, and complete streets.
- Winter activities, especially sliding, snowshoeing, winter walking, cross country skiing.
- Spaces that support multi-generational activities.
- Parks and recreation assets as a means to attract new families and professionals.
- Explore and creation of a School Park as the social and recreation centre of the neighbourhood.
- Art and cultural programming and integrating small performance spaces into open space design.
- Using high quality community branded design themes to create fun engaging places.

Trends in Park Design

More examples are provided in Section 3

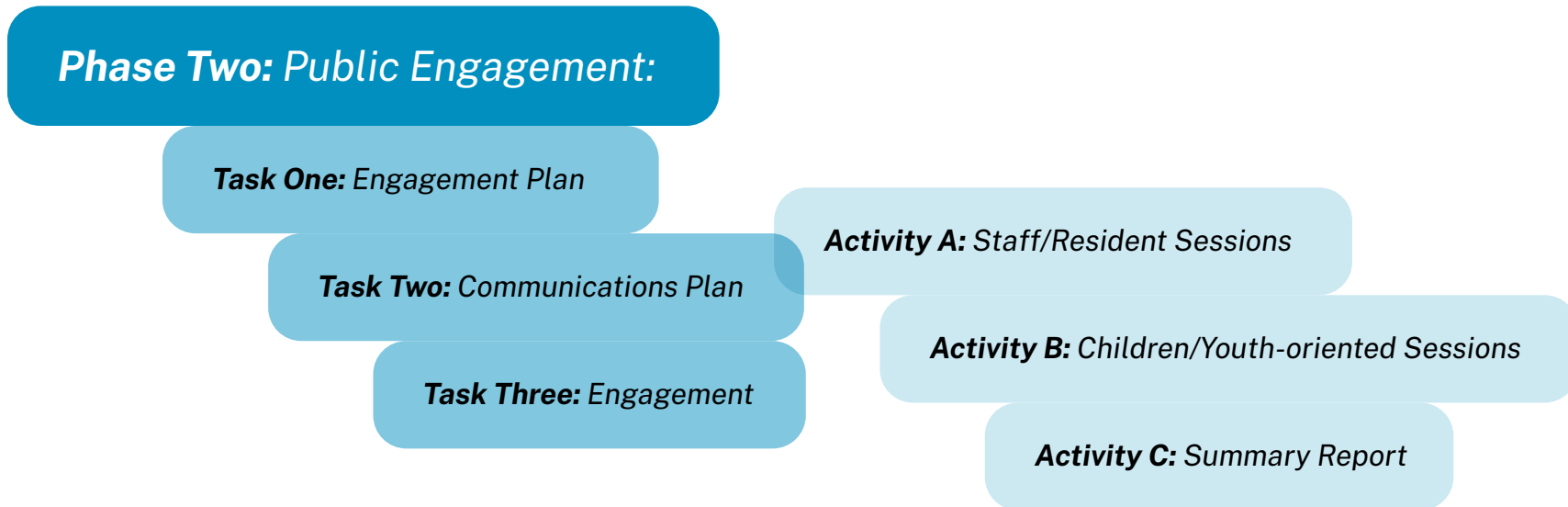


In Section 3:
Public Engagement Planning / Staff + Resident Sessions / Children + Youth-oriented Engagement

3

Public Engagement

3. PUBLIC ENGAGEMENT



Public Engagement Planning

Effective public engagement is essential to developing a good neighbourhood plan for recreation and open spaces. Tract undertook a comprehensive and innovative consultation process that was targeted and focused in its approach. As outlined in the figure to the right, the Tract team gathered input to determine the key issues, needs and preferences of Elizabeth Park residents without raising unrealistic expectations. In order to undertake the engagement process in the most efficient and effective manner, the Team started by developing engagement and communications plans.

Key constraints for consideration in planning the public engagement process included:

- COVID-19 protocols regarding public gatherings and access to the school
- Christmas events
- Competing deadlines for end-of-term report card preparation and parent/teacher interviews
- Start of COVID-19 vaccinations in the school

Engagement Plan — Elizabeth Park Recreation + Open Space Refresh Project

Town Website + Facebook Page:

This page included:

- 1. an introduction to the Project*
- 2. dates + descriptions that set out public consultation opportunities*

Public Consultation:

- 1. Public Survey — online survey for the Elizabeth Park Refresh Project*
- 2. “Jane Walks” of Elizabeth Park Area (on December 4, 2021)*

Tract hosted “Jane Walks” for the Elizabeth Park area:

- Two sessions: 10:30 am and 1:00 pm*
 - Attendees could be adults and children*
 - 11 x 17” maps of the key area were made available for notation;*
 - Two Tract representatives hosted the walks and recording comments*
- 3. Wednesday, December 8, 2021:*
 - Paradise Community Centre — Resource Room — 7 pm*
 - Presentation included “Here’s what we heard: Please tell us more!” and an interactive component (similar to the Woodstock Park exercise)*

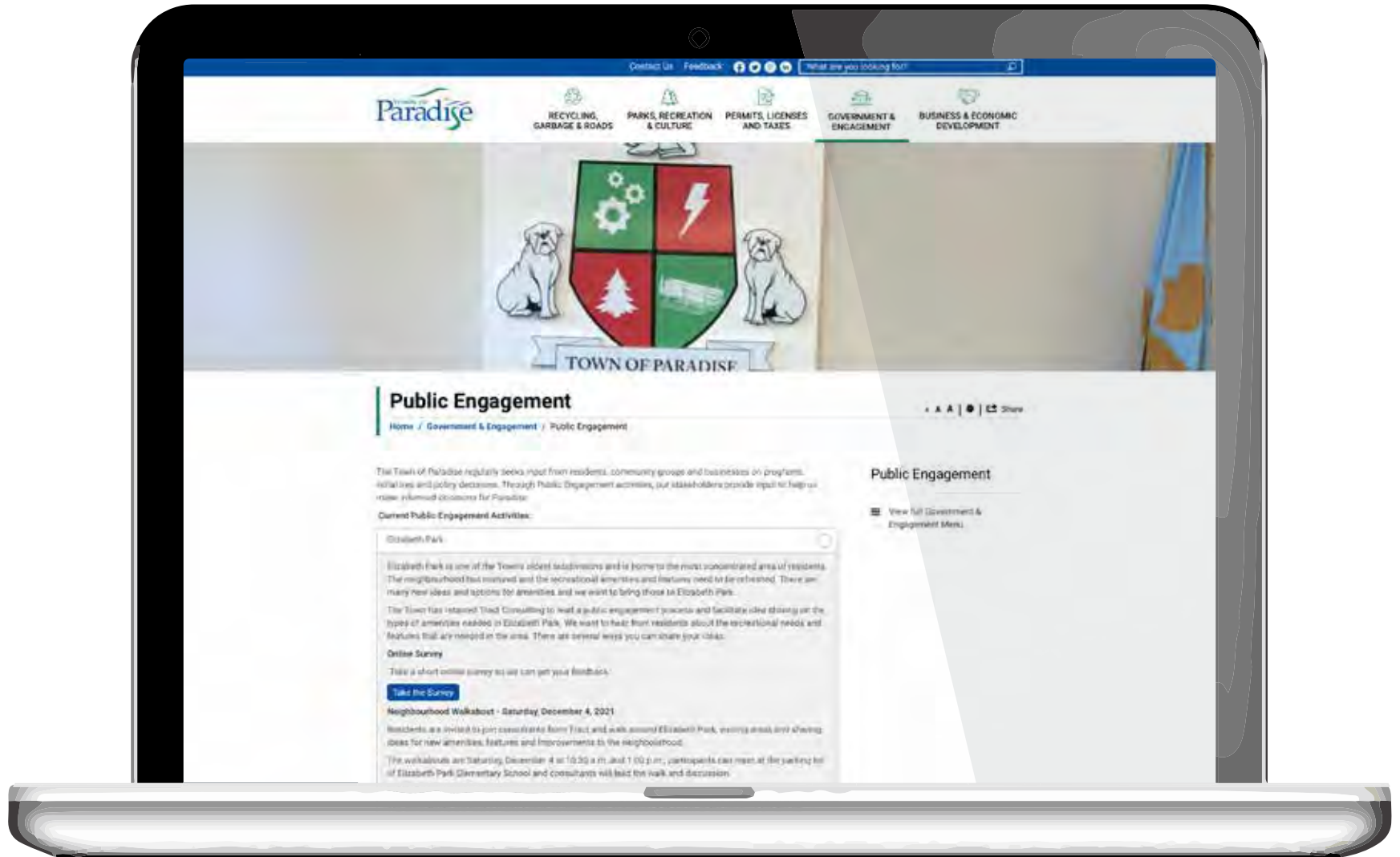
Proposed Children/Youth Consultation — December 7, 2021:

- 1. Meeting at 9:30 am November 30 at Elizabeth Park Elementary School*

Communications Plan

Concurrent with preparation of the Engagement Plan, Tract worked with the Town's Communications department in development of a Communications Plan for the engagement process and the project as a whole. The Town Manager of Communications prepared and posted the following social media messaging for the project.

In addition to this outreach effort, the Principal of the Elizabeth Park Elementary School contacted parents through the school messaging program. Parents were made aware of the school project, the online survey and the opportunity to participate in the 'Jane's Walks' and online survey.



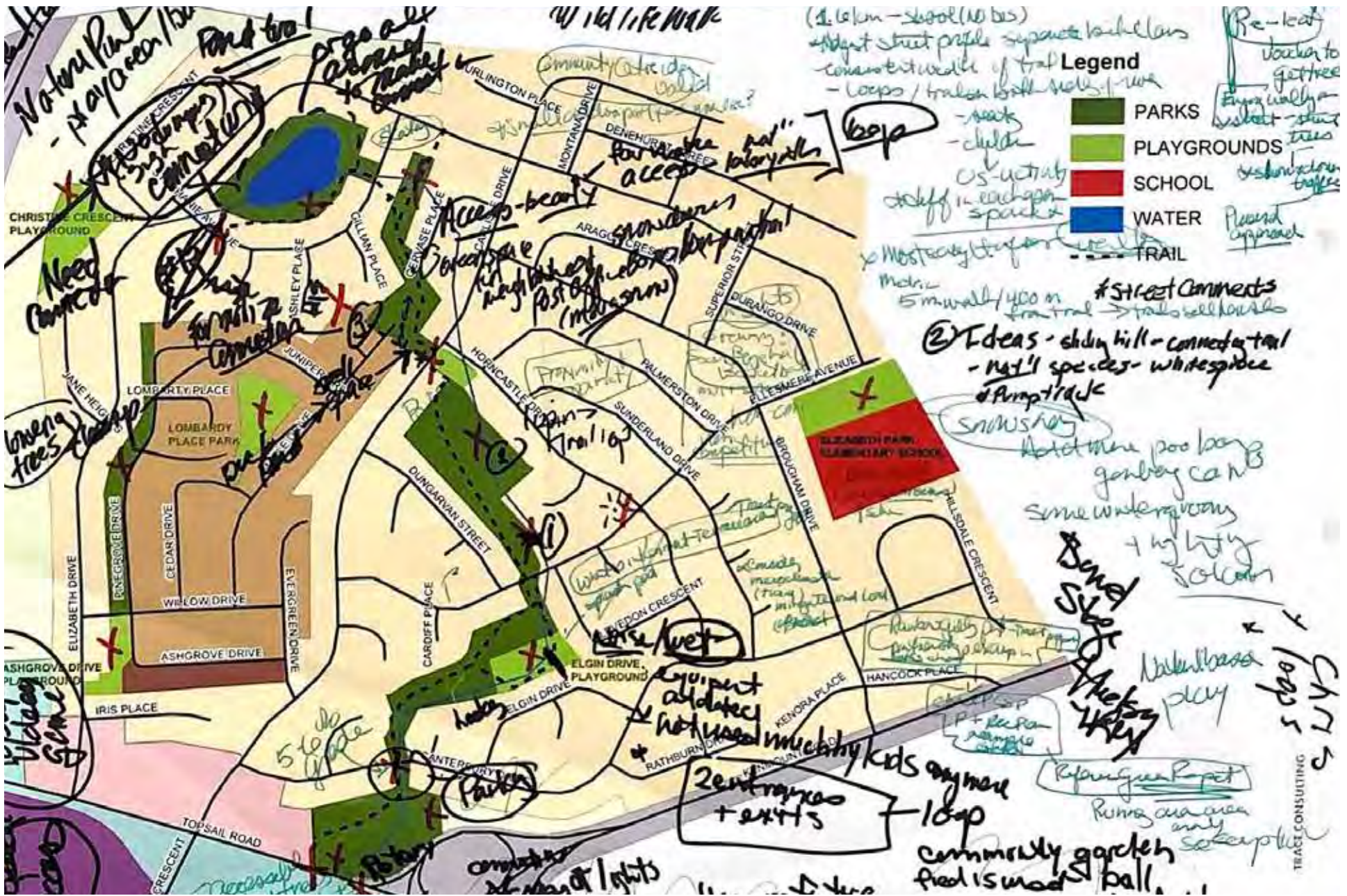
Staff + Resident Sessions

Jane's Walks

On December 5, 2021 the Tract team hosted two 'Jane's Walks' through the project site using the neighbourhood trail as the main route. Possibilities for loops and improvements to parks and open space were explored along the way.

One Tract representative led the walks while the other team member captured ideas, concepts, questions and recommendations on an 11"x17" map of the area. It was a cold day but there were considerable comments captured, as shown below.





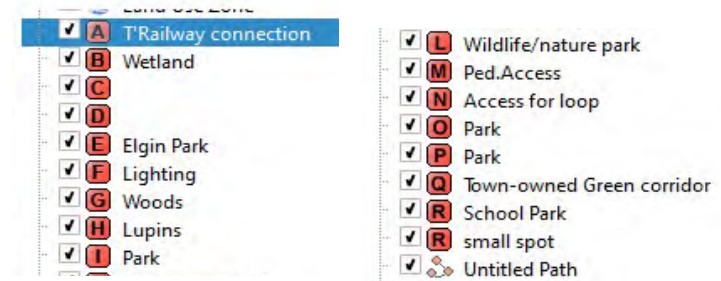
Jane's Walk notes taken by Tract

Elizabeth Park “Jane’s Walk” December 4, 2021 — Summary of Comments:

These comments were organized from the commentary provided on the adjacent map. Details related to each of the alphabetically identified sites can be found in the appendices.

This detailed commentary are summarized as follows:

- More lighting on streets
(is solar lighting an option?)
- Nature-based development of recreation and open spaces (Nature labyrinth?)
- Need walking connectivity – ok to use street wayfinding signage to make connectivity easy to follow (show loops/distances)
- Make trails, parks and open spaces ‘Accessible’, i.e., Curbs need to allow for wheelchairs
- As the residents in the neighborhood are all within 1.6 km of the school, there is no bus service: need to make streets more friendly and safer for children to walk or bike to school;
- Adjust street profile, separate cyclists from traffic with a separate lane, More street trees — contributes to slowing traffic but also makes walking the street more enjoyable (as part of looped walking system)
- Need more garbage and recycling bins
- Have something different in each open space/ park area
- Integrate use of smart phones/video games into nature-based interpretation and games
- Have pop-up events for kids or families
- Create opportunities for non-competitive participation



Community Survey

A Community Survey was undertaken to provide a convenient opportunity for participation in the project. It was not restricted to the Elizabeth Park residents; however, of the 282 respondents, 85% lived in Elizabeth Park. Only 1% were from outside the Town and the remainder were residents of the Town of Paradise.

Question 2:

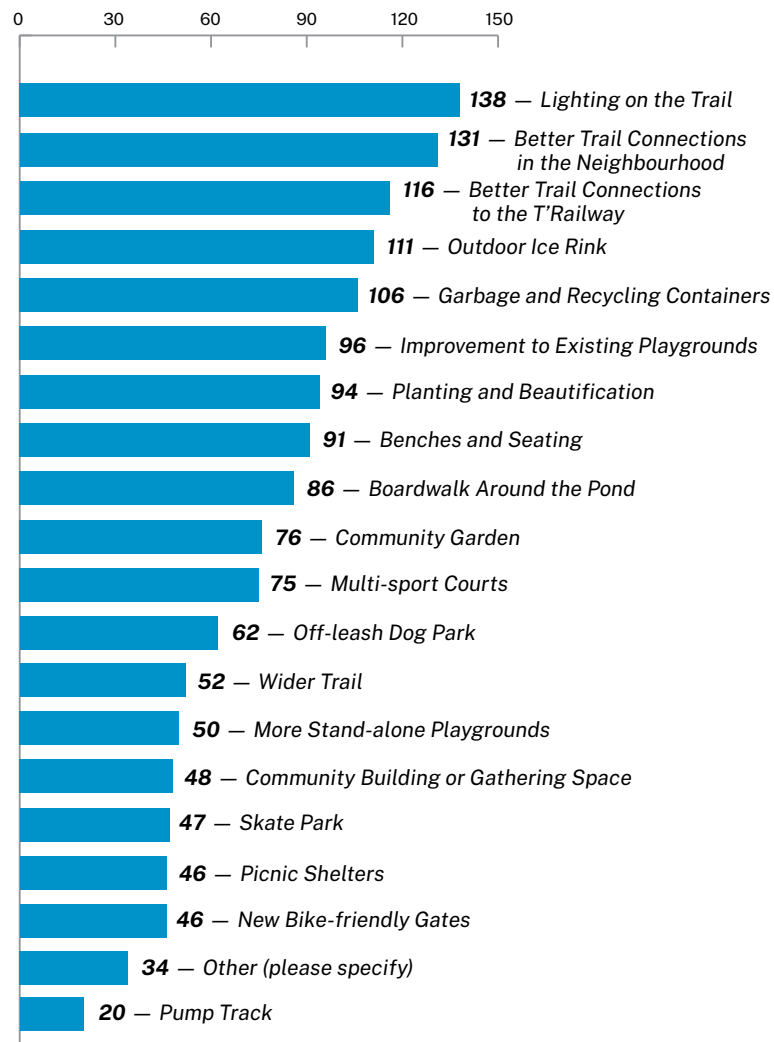
The following are responses to the Statement:

'I use the Elizabeth Park open space and parks for the following activities:' had the following results:

- **80%** – Walking for pleasure or exercise
- **49%** – Playgrounds
- **43%** – Dog walking
- **23%** – Walking to/from school
- **11%** – Tennis courts
- **3%** – Pickle ball

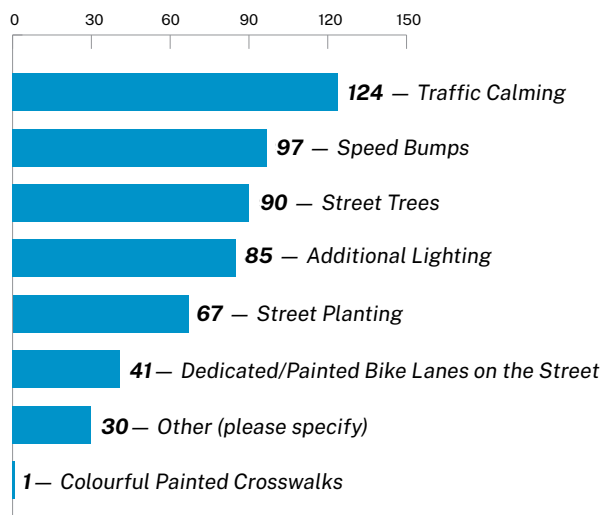
Question 3:

What would you like to see on your Trails and Open Spaces in Elizabeth Park?



Question 4:

What would you like to see on your streets in Elizabeth Park?



Question 5:

I would like the following improvements made for children and youth in the Elizabeth Park subdivision.

people playgrounds green space youth young children speeds walking trails Carlisle Drive
Traffic calming friendly lot going fun also paradise swimming pool well around
Ellesmere sports crosswalks community middle children use space many
basketball courts four way stop especially play area trails
Updated playgrounds safe green space kids upgrades school adults
playgrounds even area hang park skate park
needs Elgin park street Slow traffic Speed bumps
skate park basketball walking high school Elizabeth Park amenities
traffic roads see make Better brougham etc nice lighting slow
community centre bikes pump track maybe winter outdoor rink play younger kids
tennis courts rec centre Drive park basketball court Improved courts skate parks running

Question 6:

I would like the following improvements made for seniors and adults in the Elizabeth Park subdivision.

streets traffic calming dog Speed bumps access boardwalks Elizabeth park upgrading
seniors made place park lighting trails trees need current lighting
Better lighting area road trails community
walking trails cross walks walking ways Better
improve also speed benches go sidewalks groomed space well nice
community center dog park Community centre Safe trail system community garden

Question 7:

Age of Respondents:

- 46% — 31-45 years
- 41% — 46-64 years
- 9% — 21-30 years

Question 8:

Do you have any additional comments regarding parks, open space, trails and recreation facilities in the Elizabeth Park subdivision?

open spaces leash dog park neighborhood recreation facilities improvements improved people age court dogs lighting know nice beautiful love see connected make around great better live go one children walk many love streets community time spaces lot Paradise activities trails summer need parents area road park safe Elizabeth Park play playground development kids cleaning school another new driving dog park updated Thank town see please well speeding subdivision near walking trails Perhaps USE years place think old etc kept put also community garden Elgin Park pump track Carlisle

Elizabeth Park Refresh Project – FORUM

A Community Forum was held on Wednesday December 8, 2021 at the Paradise Community Centre, Resource Room, at 7 p.m.

There was a low turnout with 10 people in attendance.

There was a PowerPoint presentation summarizing 'Here's what we heard: Please tell us more!'. This was open for discussion.

The group was divided into two sub-groups and a mapping exercise was undertaken in order to allow participants to express opinions on issues and indicate preferences for recreation development and enhancement of the open space.

Key Discussion Comments:

- Enforcement (prevention of vandalism and nuisance);
Recommendation: look for a model of self-regulation involving the school or residents
- Engage children in implementation, such as, planting trees
- Keep schools involved in the development of the Elizabeth Park Refresh ideas
- Need free WIFI
- Make areas multi-purpose
- Have Blue bins as well as garbage bins
- Connectivity was a recurrent theme, especially need to bring people from the edge of the subdivision into the centre where the park and open spaces area
- Consider options for trail bike use of the trail on the outskirts of the subdivision that is currently used by ATVs; with education and signage, there might be the possibility of multiple use

Community FORUM Mapping Exercise

Participants reviewed the variety of possible activities and facilities that were presented to the children in the school as part of their 'amenity preference' exercise. They were asked to select which amenities they would like and indicate where they should be located on maps of the Elizabeth Park area.



List of amenities, activities and comments corresponding to pin locations on this map:

1. Traffic calming
2. Rose bushes
3. Limit ATV access
4. Town considering changes to intersection
5. Sliding Hill
6. Pop-up events
7. Outdoor rink
8. New trails
9. Wellness hub
10. Sell fast
11. New area-younger people
12. Older area-older people
13. Refresh park for multiple uses
14. Nature Play
15. Smart Play
16. Trails
17. Skating Rink
18. Skate Park/Pump Track
19. Traffic Calming
20. WIFI everywhere
21. Trail connectivity
22. Sliding Hill
23. Pump Track
24. Natural kid's hangout
25. Small community garden
26. Mountain bike/ATV trail

Children + Youth-Oriented Engagement

Objective: To involve children & youth in the design of their neighbourhood – play spaces, trails & streets;

Key challenge: COVID restrictions. The Tract team partnered with Elizabeth Park Elementary School for this component. Elizabeth Park Elementary School offers education in both English and French immersion to students in grades K-6. The school has an enrollment of approximately 600 students from the area.

To accommodate COVID protocols materials were provided to teachers, who then facilitated session with children to enable them to express their preferences.

Materials provided by Tract:

A. One wall size map of the Elizabeth Park subdivision for each classroom.

B. Examples of innovative activities and facilities for the children to consider — see the adjacent images. These were displayed on the ‘smart boards’ as part of the class exercise.



Winter Activities: Sliding hills



Community Wellness Hubs: As many gyms have closed parks have become the go-to for group classes, yoga, etc.



Nature Play:



Pop-up Events: Short-term use of space for neighbourhood events.



Smart Play: Phone integration



Smart Play Cube (0-5 yrs)

Mult-Sports Courts/Pickle Ball:



Trails, Parks + Open Space:



New Bike Gates



Picnic Shelters



Unique Shelters with Seating



Trail Benches



Boardwalks

Trails, Parks + Open Space:



Fun Hangout Spots



Pump Tracks



Nature-based Play Features



Trails, Parks + Open Space:



Off-leash Dog Park



Solar-powered Phone Charging Shelter



Skate Park with Small Elements Throughout



Multi-sport Court



Outdoor Rink

Street:



Dedicated/Painted Bike Lanes



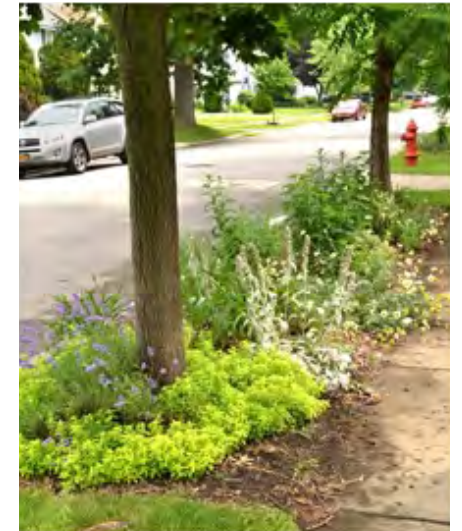
Community Bike Art



Traffic-calming



Lighting + Street Beautification



Street Planting

In total, 19 classes participated in the project. Students indicated their preferences for parks and recreation amenities. The age groups were distributed by class, as follows:



- **Kindergarten** — 2
- **Grade One** — 3
- **Grade Two** — 3
- **Grade Three** — 2
- **Grade Four** — 2
- **Grade Five** — 1
- **Grade Six** — 2
- **Miscellaneous** — 4



SUMMARY OF RESULTS FROM ELIZABETH PARK ELEMENTARY SCHOOL

Category	Ranking
<i>Multi-sport Complex (fields, parks, courts, etc.)</i>	1
<i>Waterworks (pool, splash pads, fountains, etc.)</i>	2
<i>Playground – Upgrades</i>	3
<i>Pump Tracks/Skate Parks</i>	4
<i>Hang-out Areas</i>	5
<i>Landscape Beautification</i>	6
<i>Animal Parks</i>	7
<i>Trails/Roads</i>	8
<i>Sheltered Areas</i>	9
<i>Entertainment (movies, arcades, etc.)</i>	10
<i>Lighting (streets, parks, etc.)</i>	11
<i>Art and Craft / Talent Show</i>	12
<i>Washrooms</i>	13
<i>Speed Bumps</i>	14
<i>Lost + Found</i>	16

In Section 4:
Existing Neighbourhood Connectivity/Recommendations/Phased Implementation

4

*Recommendations
+ Implementation*

4. RECOMMENDATIONS + IMPLEMENTATION

Phase Three: Final Report

Task One : Gap Identification/Analysis

Task Two: Recommendations

Task Three: Phased Implementation

Activity A: Cost Estimates

Activity B: Multi-year Plan

Task Ten: Final Report Consolidation

In the third phase of the planning process, the project team developed recommendations and an implementation plan to refresh the recreation and open space in Elizabeth Park that best meet the current and future needs of residents. From the results of the first two Phases, gaps and needs regarding which exist in current recreation amenities and open spaces were identified. Recommendations suggest the best course of action, while a multi-year implementation plan identifies the development cost of components..

Gap Identification/Analysis

Based upon findings from the Research and Public Engagement Phases, the Project Team identified gaps, overlaps, deficiencies with respect to facilities, open spaces, programs, and services in Elizabeth Park. These findings are organized both geographically and by theme (type of facilities, open spaces, etc.).

Recommendations

The project team developed specific recommendations and priorities to meet the current and future recreation and open space needs of Elizabeth Park. Priorities were established based on community goals, public benefit, order of magnitude capital and operating costs, leisure trends, best practices and demographic changes.

Recommendations will address the following areas:

- Neighbourhood Connectivity: Recommendations for improved connectivity within the neighbourhoods with respect to accessing recreation facilities, parks, and open spaces.*
- Facilities and Open Spaces*

Including, but is not limited to:

- *Retro fitting, converting or upgrading current facilities/ open spaces*
- *Removing of facilities or open space*
- *Adding any new facility or open space components*
- *Identifying locations for new facilities or open spaces*
- *Design concepts*
- *Phased implementation plan*



Existing Neighbourhood Connectivity

The plan on the next page shows existing neighbourhood connectivity. Elizabeth Park has incomplete connectivity between it's existing trails, parks and open spaces. The central trail (black) is in need of upgrades and repairs, and ends at the intersections of Stephanie Ave. and Canterbury Drive. The two wetland areas to the north and the south have informal walking paths (red), showing a desire in the community to have these included in the main trail.

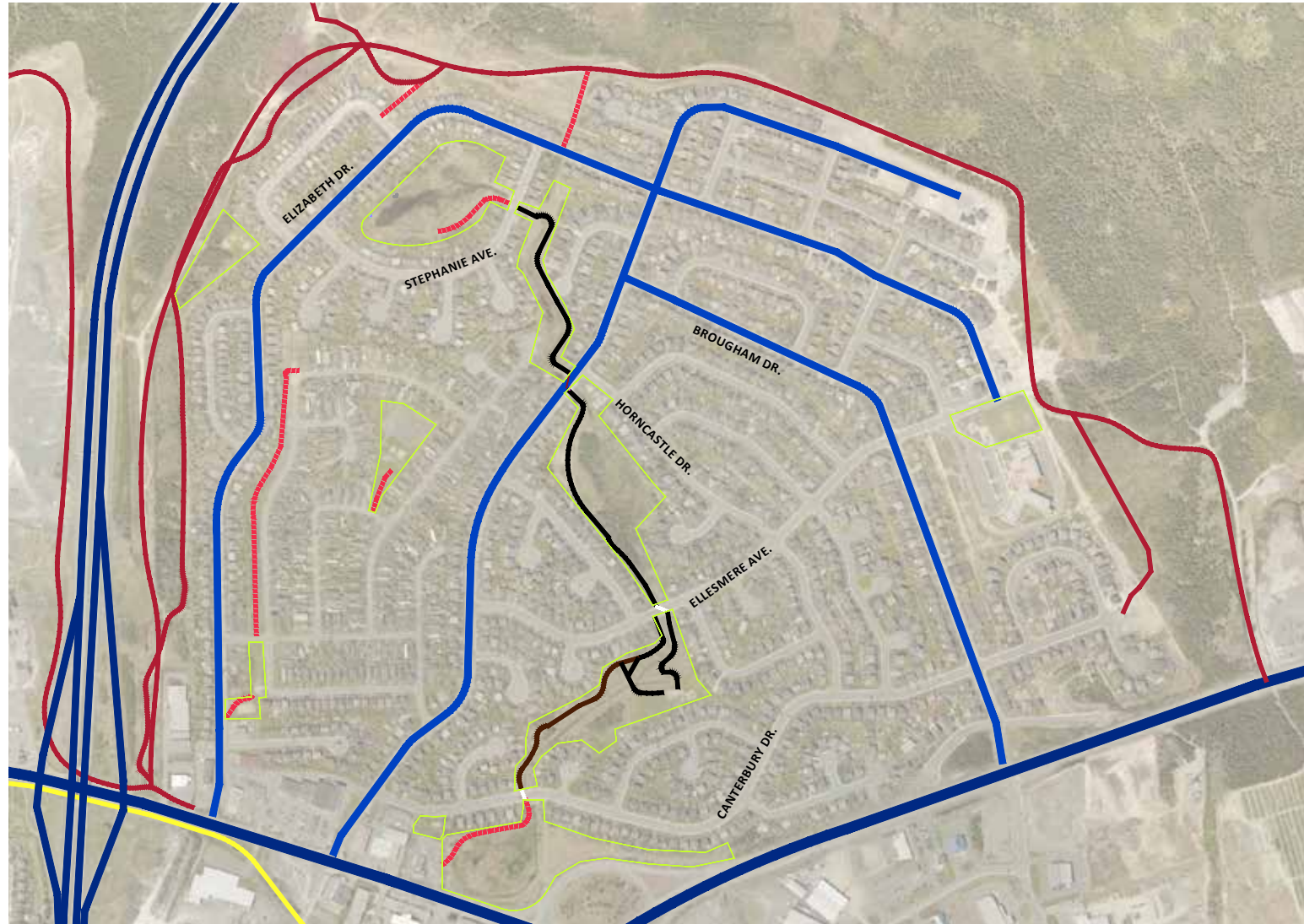
Elizabeth Park is surrounded by informal multi-use trails (maroon). These trail are used by mountain bikes and motorized vehicles. The motorized vehicles cause neighbourhood disturbance, and the Town has implemented cattle gates and boulders as a means to try and stop ATV's and dirt bikes from driving in the community.



Existing Neighbourhood Connectivity

LEGEND

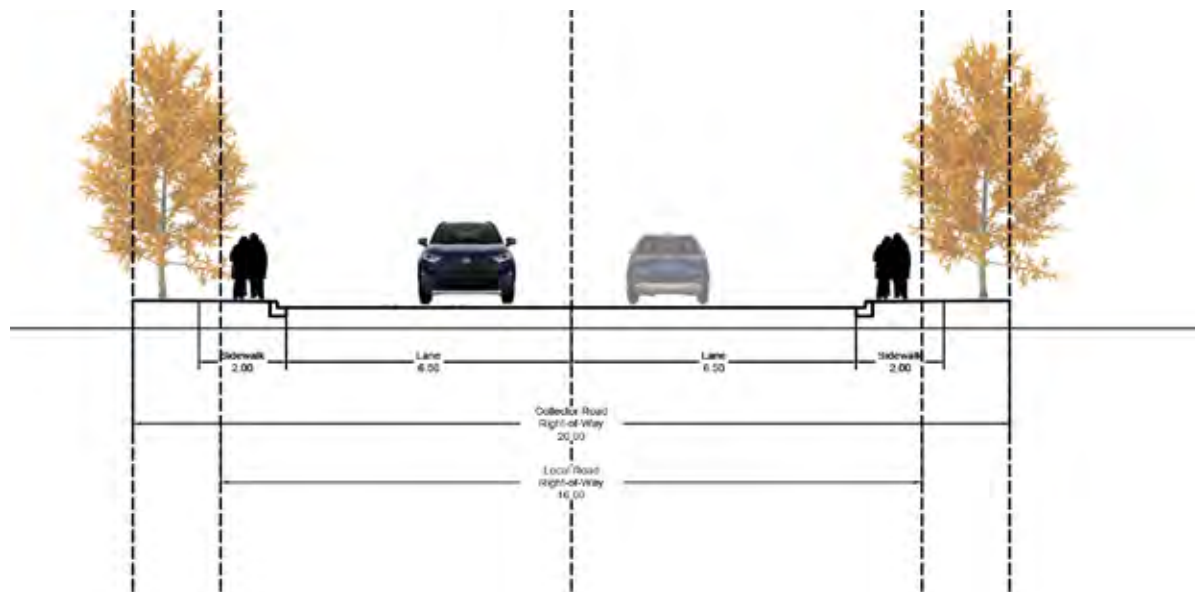
- Arterial road
- Collector road
- Existing T'Railway
- Existing trail
- Informal pedestrian trails
- Informal multi-use trails
- Crosswalks
- Existing parks and open space



Existing Neighbourhood Connectivity



Existing Typical Roads



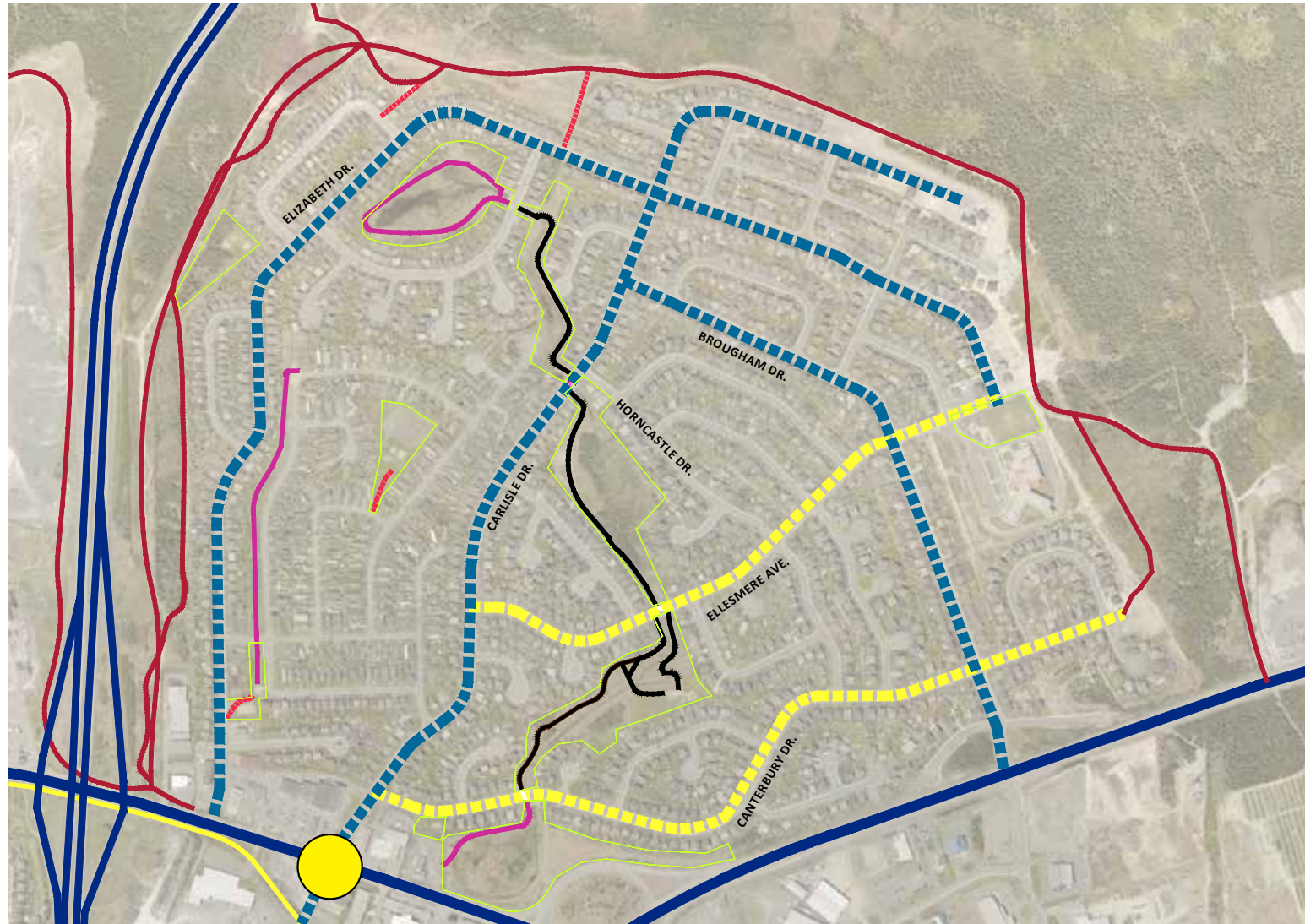
The existing neighbourhood has three collector roads, as defined by the town of Paradise Development Plan street classifications; Elizabeth Drive, Carlisle Drive, and Brougham Drive. These roads have a 20 meter Right of Way (ROW), two extra wide driving lanes with parking on each side (totaling 12 m.), and two, 2 m. wide sidewalks. There are very few trees planted within the ROW.

*Recommendations
Streets + Bike Lanes*

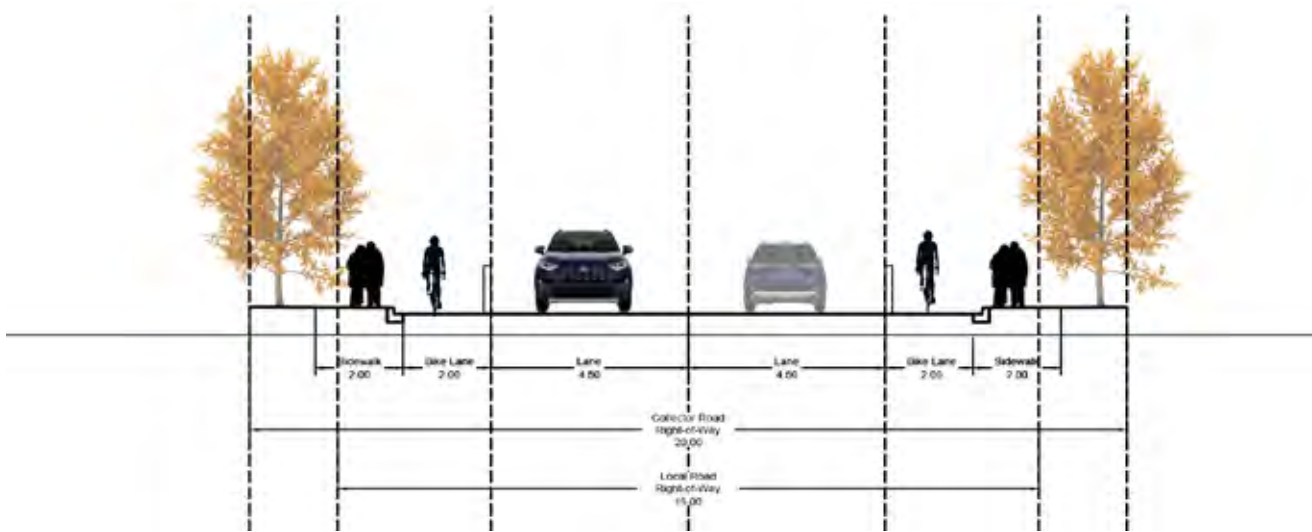
Proposed Bike Lanes

LEGEND

- Arterial Road
- Primary Bike Lanes
- Existing T'Railway
- Existing Trail
- Informal Pedestrian Trails
- Informal Multi-use Trails
- Proposed New Trails
- Secondary Bike Lanes
- Connection to T'Railway
- Existing parks and open space

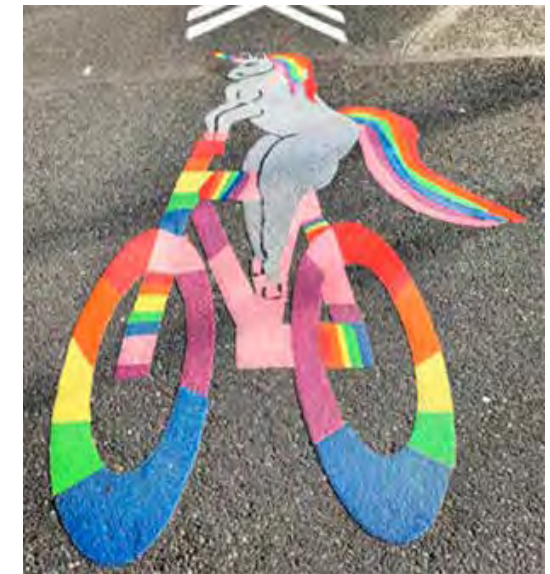
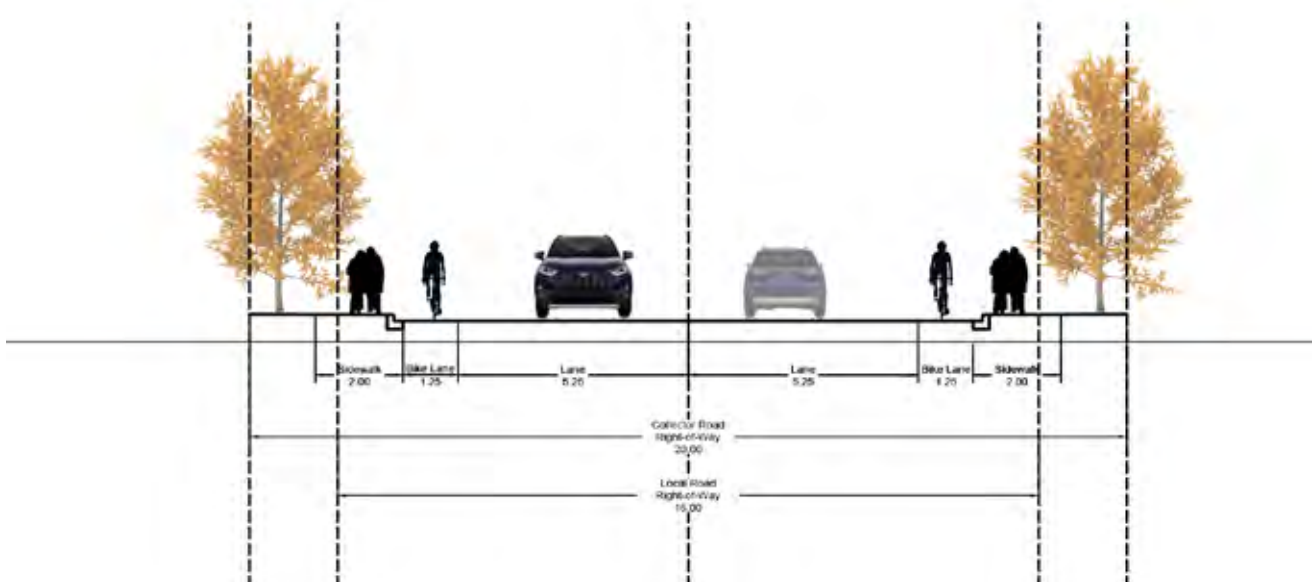


OPTION 1 - Bike lanes with no on-street parking

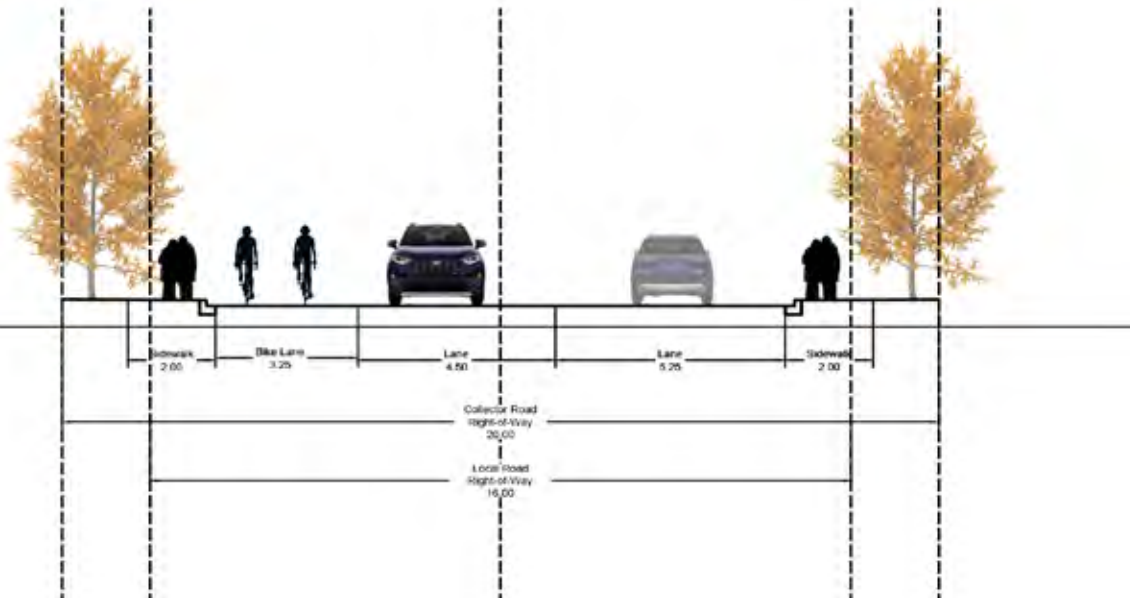


To increase neighbourhood connectivity adding bike lanes to the collector roads (primary bike lanes) and on two of the local roads (secondary bike lanes) is recommended as shown on the adjacent plan. The main objective is to allow children to get safely from their homes to school using the existing road infrastructure. These new bike lanes will also allow for cyclists to connect to the exiting T'Railway at the controlled intersection of Carlisle Drive and Topsail Road.

OPTION 2 - Bike lanes with on-street parking



OPTION 3 - Two-way bike lanes with street parking on one side



Three options for bike lanes are recommended. Each of the options will fit the existing curbs, while maintain adequate road lane widths, and adhere to the Towns Development Regulations. The bike lanes can be defined in a number of different ways; such as with signage, line painting and bike bollards at intersections. It is also recommended that the existing cattle gates be replaced with a more attractive solution.



*Recommendations
Parks + Open Spaces*

Overall Parks & Open Space Recommendations

LEGEND

- ↔ Central Trail Connection
- Nature & Water
- Playgrounds
- Adventure Play & Skills Development
- Community & Technology
- Educational



During public engagement several reoccurring themes were brought up by participants. From this, a list of themes was developed to be used for overall park and open space planning. Themes include; nature, water, playgrounds, adventure play, skills building, community gathering, technology and education. As shown in the adjacent plan the main focus of themes are nature and water which are all connected by the central multi-use trail.

This central link is recommended as a multi-use trail that will allow cyclists. Motorized vehicles are not permitted within Elizabeth Park boundaries. Where possible, it is recommended that all trails are designed to meet current accessibility standards.

A linear bike aprk trail has been created within the green belt along Pinegrove Drive (red line). This advanced bike skills parks will be designed for the more adventurous user. It is recommended that signage will identify the appropriate skills level required for its use. There is an elevation change of 10 meters between Willow Drive and Juniper Drive, which will make for a fun ride southward and a relatively easy street ride back up north, for a continuous looping ride.

The overall parks and open space recommendations aim to have a different type of activity at each site with continuity in surface materials, benches, planting, trees and nature based play features. The following pages describe in more depth the recommendations at each location.

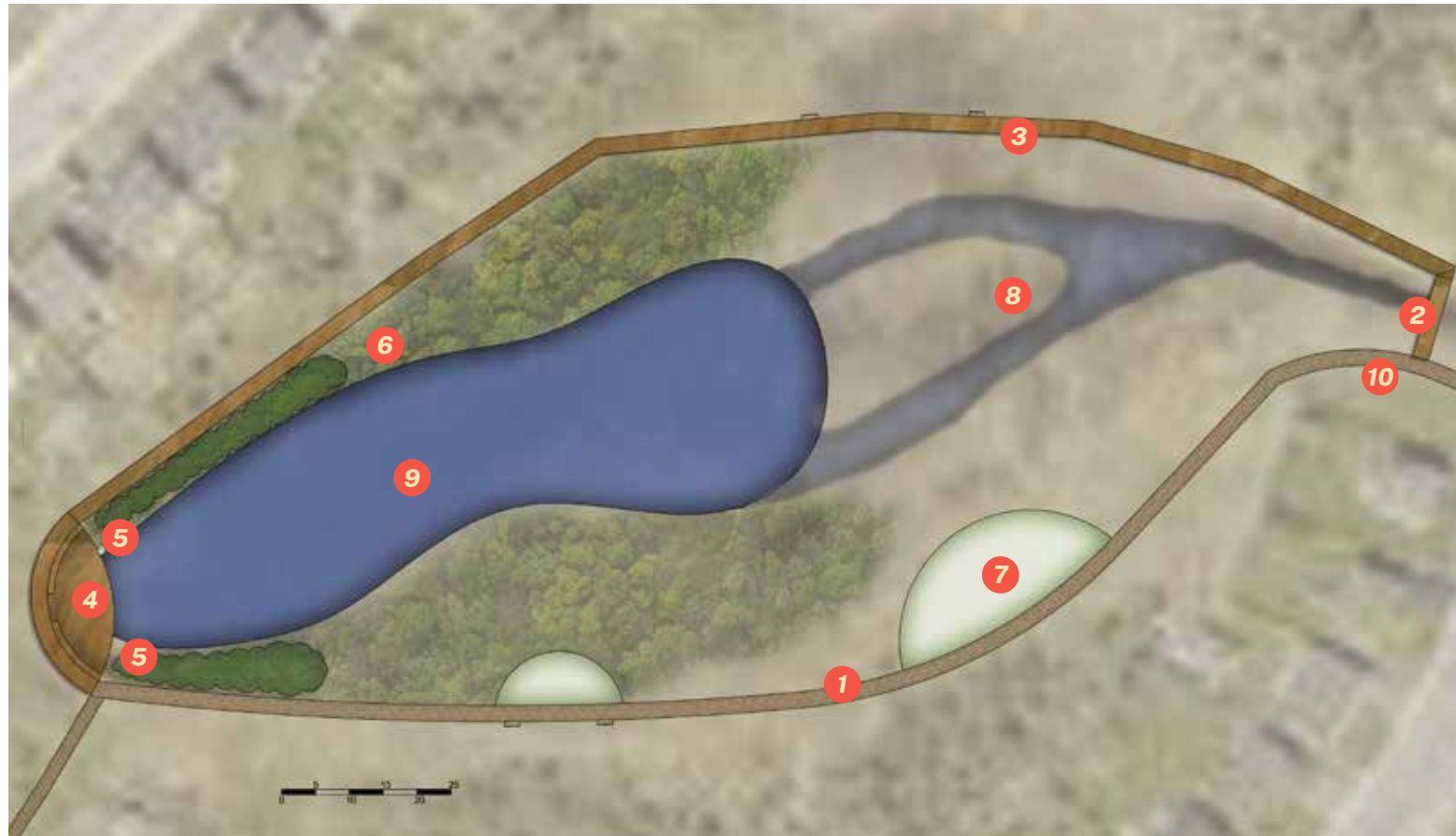
There was a strong desire from the public for more lighting, thus some lighting upgrades have been recommended in park areas that are projected to have night use. Wi-fi and charging stations are also recommended in some locations to meet technologically trends.

Top Pond Park

LEGEND

- 1 Granular trail
- 2 Bridge
- 3 Boardwalk
- 4 Deck with built-in seating
- 5 Lights
- 6 Windbreak planting
- 7 Lawn
- 8 Wetland
- 9 Open water/skating
- 10 Garbage cans

Located in the Stephanie Avenue open space, a nature trail is recommended. The proposed trail and boardwalk will complete the loop of the main central trail. Benches and garbage cans will be located along the trail. A wooden deck with built-in benches and lighting will be located in the southwest corner and could double as a skate lace up area in the winter.

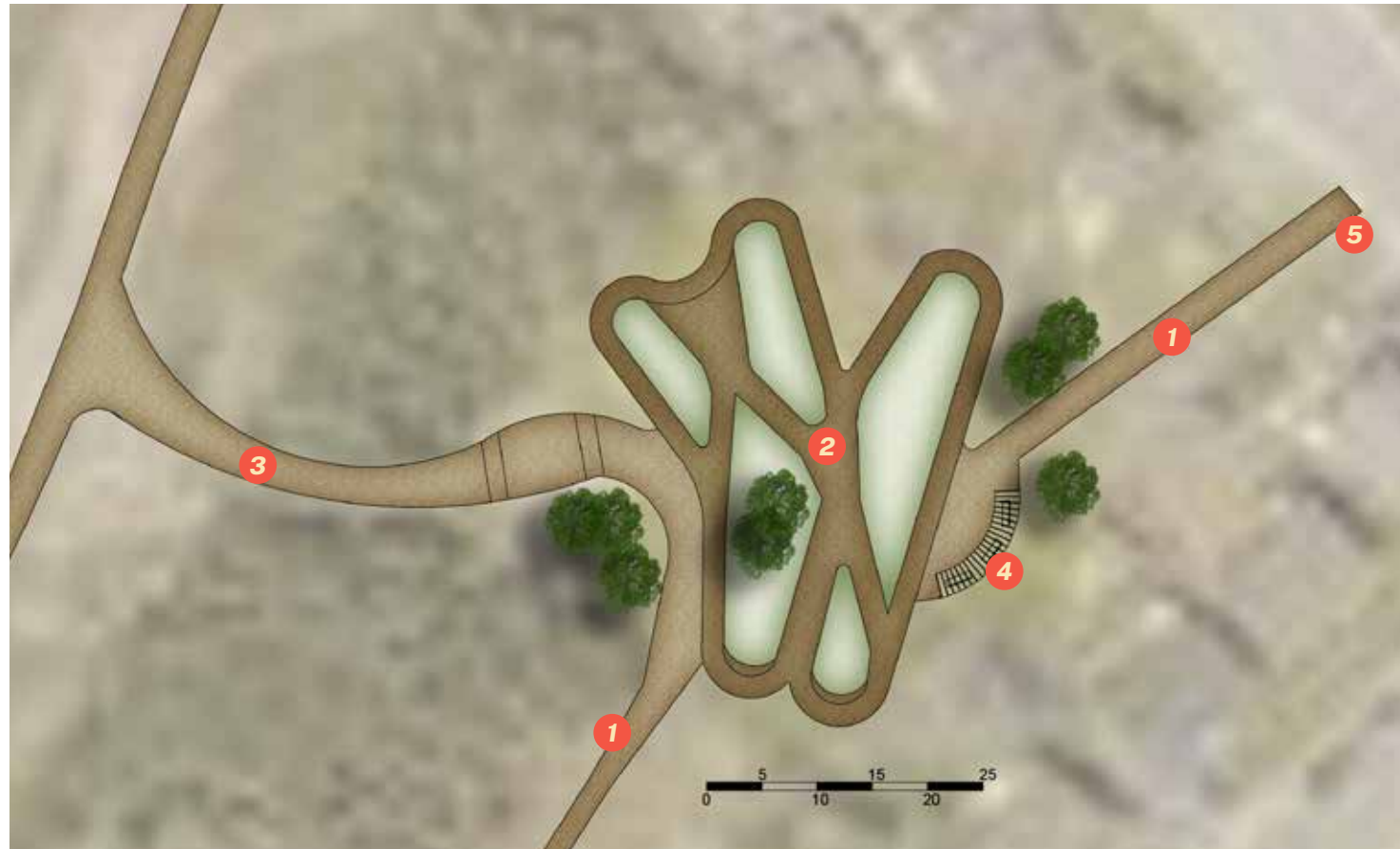


Pump Track Park

LEGEND

- 1 Granular trail
- 2 Dirt pump track
- 3 Trail connection
- 4 Covered viewing area
- 5 Garbage cans

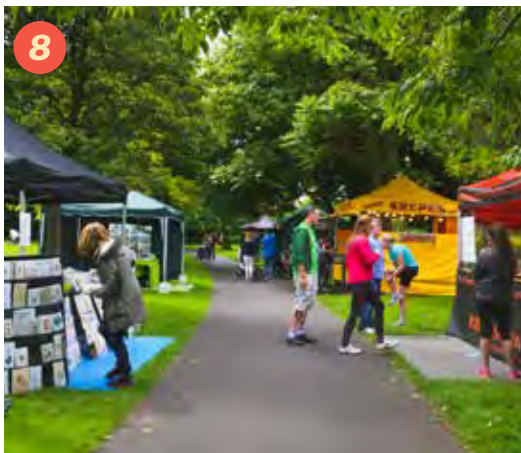
Located at Christine Crescent playground, a dirt pump track is recommended, which is a type of adventure play and skills development park. Pump tracks are hugely popular across North America, and currently only one exists in Newfoundland. There are currently too many tot-lot playgrounds in Elizabeth Park and it is recommended to remove the play equipment from this location. A pump track at this location is ideal as it has good connections to bike trails.



Community Passive Park

LEGEND

- 1 Granular trail
- 2 Covered community gathering place
- 3 Resurfaced multi-sports courts
- 4 Horseshoe courts
- 5 Bocce courts
- 6 Picnic tables
- 7 Benches
- 8 Market/events spaces
- 9 Garbage cans



Located at Lombardy Place Park, a community events and gathering space is recommended. The play equipment at this location should be removed, as it is in poor condition. This will be a passive park, meaning it is directed at leisure sports, open space, and gathering. It will feature a central covered picnic area with lighting, bbq's, water and Wi-Fi. The Informal open spaces can be used for weekend markets and movie nights. The existing multi-sports court should be resurfaced, and leisure activities like bocce ball and horseshoe pits could be added.

Skate Park & Multi-sports Court

LEGEND

- 1 Sidewalk by Town
- 2 Picnic tables
- 3 Benches
- 4 Multi-sports court
- 5 Asphalt skate park
- 6 Garbage cans

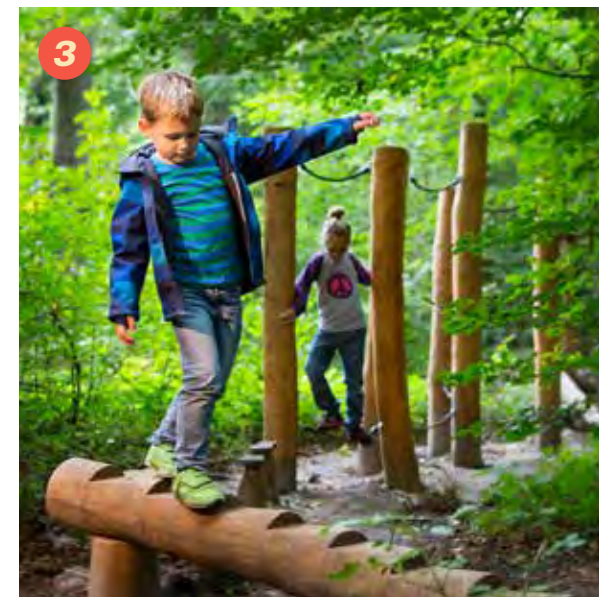
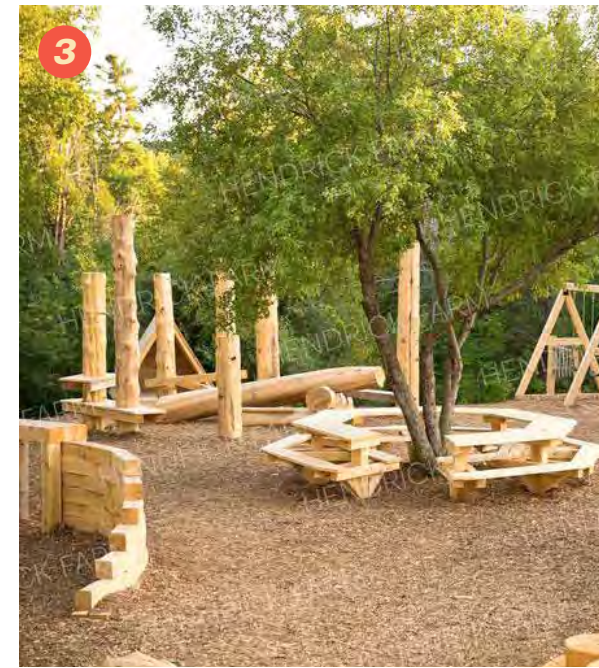
Located at Horncastle Drive playground, a skate park and multi-sports court is recommended. Locating playgrounds on corner lots can be dangerous for younger children, therefore this skills developing park will be fully fenced in and will appeal to older children. Both areas will be asphalt and the sports court can be used as a hockey rink in the winter.



Nature Play Park

LEGEND

- 1 Granular trail
- 2 Nature play equipment
- 3 Adventure play logs
- 4 Rainbow log seating
- 5 Covered seating area
- 6 Wildflower planting
- 7 Picnic tables
- 8 Sliding hill
- 9 Giant slide
- 10 Garbage cans





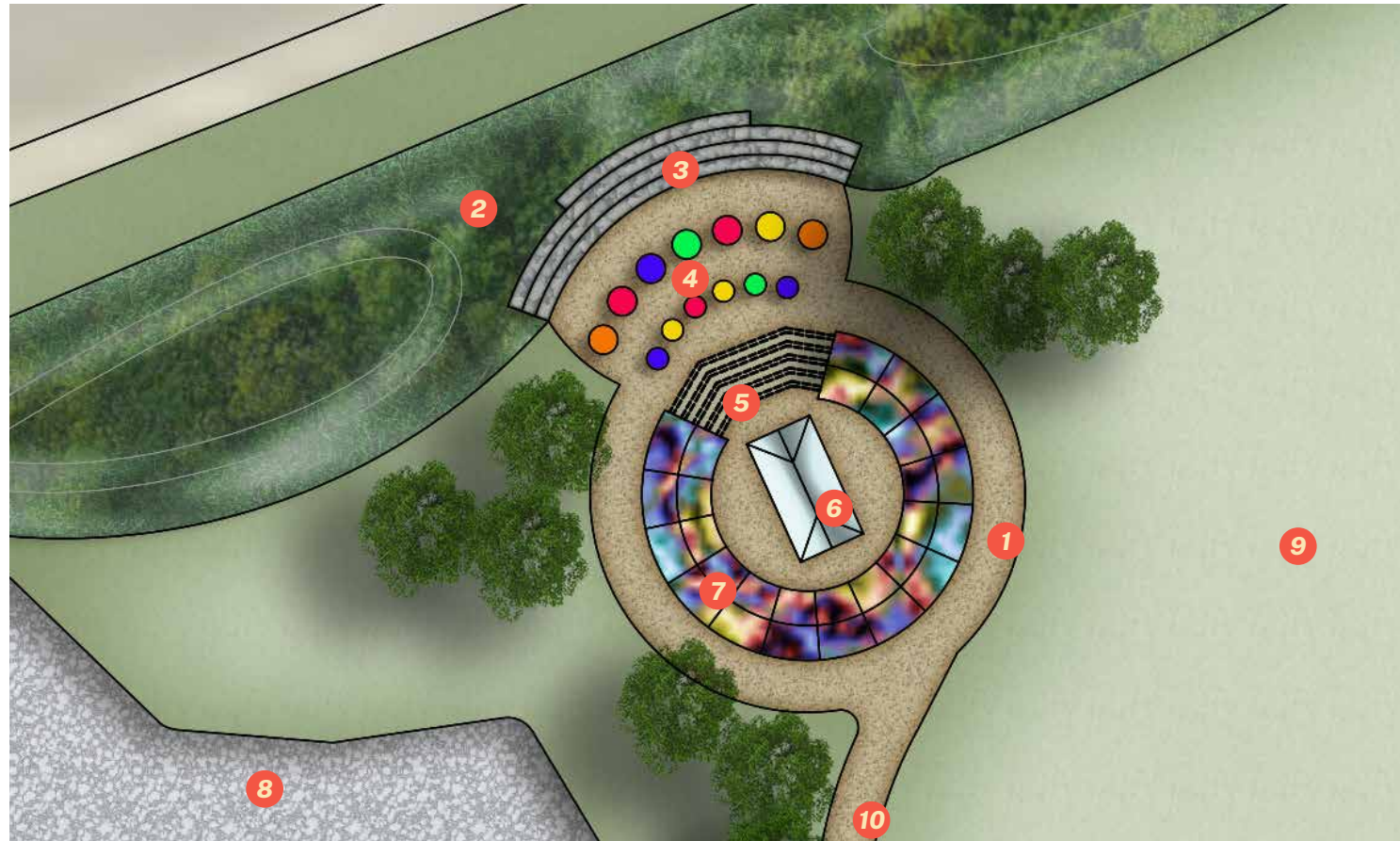
Located on the existing trail between Carlisle Drive and Ellesmere Avenue, a nature adventure playground is recommended. This park will serve as the main playground for the community of Elizabeth Park. This is a safe area within the central trail system, has good connection to streets, and has relatively flat opens spaces for new nature play equipment. Three main play areas are proposed; toddler play area closest to Carlisle Drive entrance, central play area, and sliding hill with giant metal slide. Along the trail adventure logs, ninja play areas, picnic tables, and benches are recommended. Rainbow log areas create "secrete" play areas and seating areas are nestled into the tree areas. This creates small accessible hangout spots or a quiet place to get away (for users who may have disabilities or impairments).



Elizabeth Park Elementary School Outdoor Classroom

LEGEND

- 1 Granular trail
- 2 Berm with windbreak planting
- 3 Amphitheater style Boulder seating
- 4 Rainbow log seating
- 5 Trellis with built-in teaching boards
- 6 Greenhouse
- 7 Raised garden beds
- 8 Existing play equipment
- 9 Open field
- 10 Trail connection to school





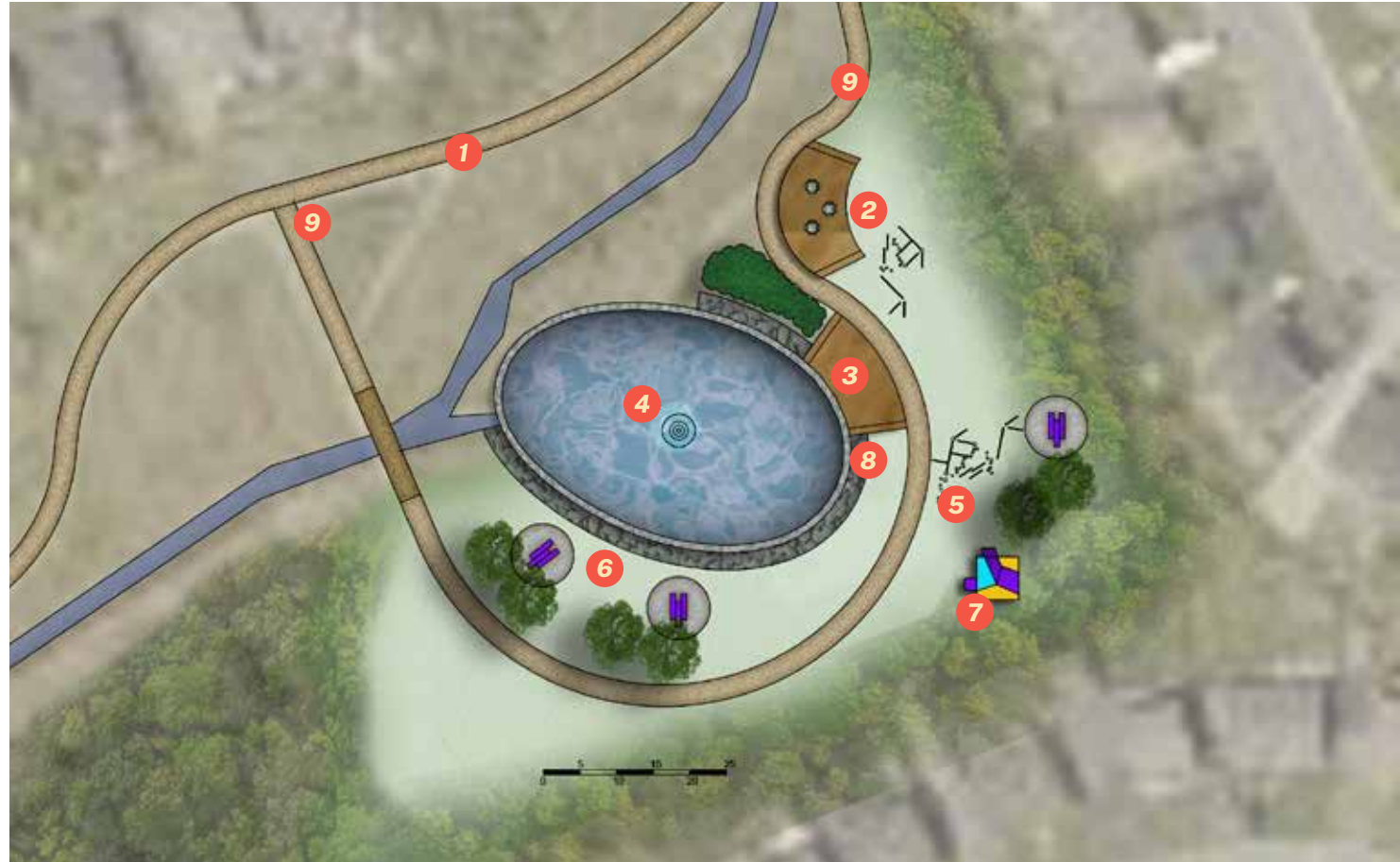
Located at Elizabeth Park Elementary School adjacent to the existing playground, an outdoor classroom is recommended. Outdoor education and play support emotional, behavioral and intellectual development. A berm will be created to act as a wind block with amphitheater style seating built into it. Movable rainbow seating logs will be located in front for additional seating. An overhead trellis is recommended for the teacher/presentation area. The back drop to this area is a greenhouse with exterior raised gardens surrounding it. This project can be completed in partnership with the Town and the School.



Middle Pond Park

LEGEND

- 1 Granular trail
- 2 Picnic area
- 3 Deck with built-in seating
- 4 Man made pond/skating
- 5 Nature play logs
- 6 Chill pods with Wi-Fi, charging stations & speakers
- 7 Rock climbing wall
- 8 Public art lights
- 9 Garbage cans





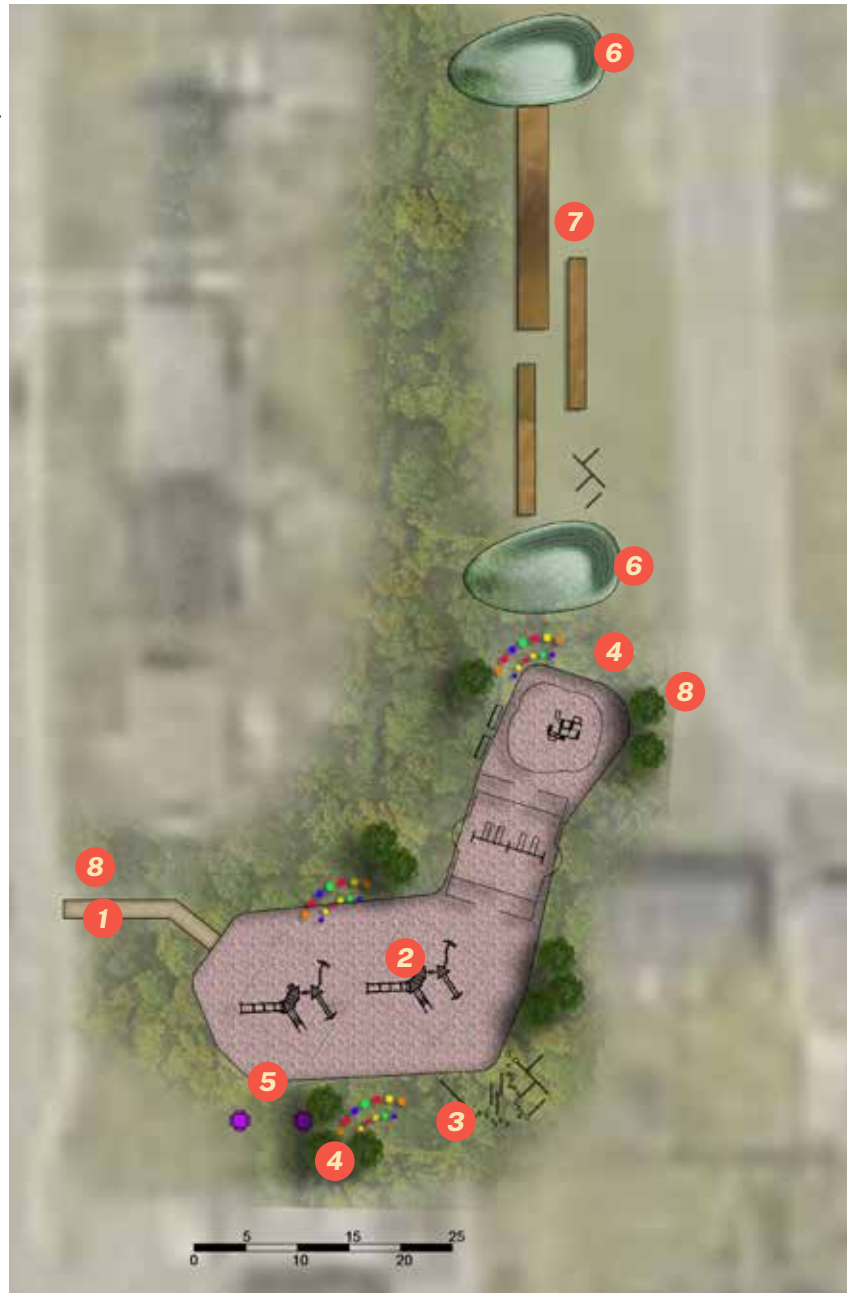
Located at Elgin Drive park, a pond and technology park is recommended. This park will feature a manmade pond similar to the duck pond in Bowring Park, and can be used for skating in the winter. Colorful interactive lighting could be located here as a public art project (see example image of public art installed in Winnipeg, MB). The park will feature wood decking with built in seating along the waters edge, picnic areas, nature play logs and a rock climbing wall. This park will have "Chill Pods" with Wi-Fi, charging stations, and speakers.



Play Ground & Skills Park

LEGEND

- 1 Granular trail
- 2 Adventure play equipment
- 3 Nature play logs
- 4 Rainbow log seating
- 5 Picnic tables
- 6 Hills
- 7 Adventure skills park
- 8 Garbage cans





Located at Ashgrove Drive park, a playground and adventure skills park is recommended. This is a good location for a secondary playground in the neighbourhood, and the existing play equipment should be removed and replaced. An adventure skills park for young bikers is proposed along Ashgrove. Children can hone their skills here before trying out the more advanced skills parks located in the green belt along Pinegrove Drive and the pump track located at Christine Crescent.



Wetland Park

LEGEND

- 1 Granular trail
- 2 Covered seating area
- 3 Windbreak planting
- 4 Wildflower planting
- 5 Wetland
- 6 Garbage cans



Located in the Canterbury Drive open space a nature trail is recommended. The proposed trail will complete the main central trail. This link is predominantly used by children going to and from McDonald's, therefore benches and garbage cans are recommended to be located along the trail. Windbreak planting and colorful non-invasive wildflower planting is recommended, giving the driver a pleasant looking natural space as they enter into the Town of Paradise.

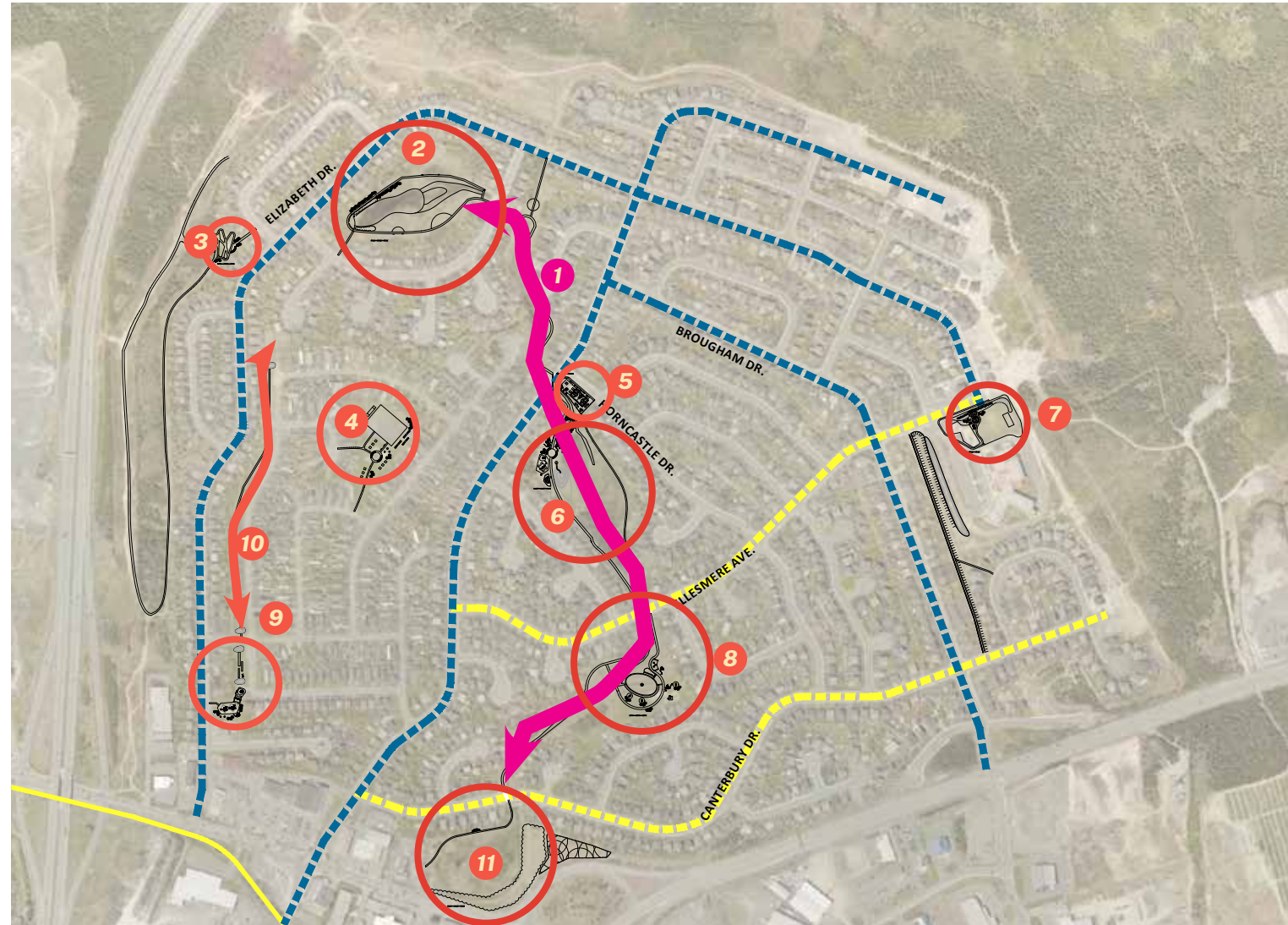


*Phased Implementation
+ Costing*

Implementation Plan














LEGEND

- 1** Central Trail Upgrades
- 2** Top Pond Park
- 3** Pump Track Park
- 4** Community Passive Park
- 5** Skate Park & Multi-sports Court
- 6** Nature Play Park
- 7** Elizabeth Park Elementary School Outdoor Classroom
- 8** Middle Pond Park
- 9** Playground & Skills Park
- 10** Linear Bike Park
- 11** Wetland Park
-  Primary Signed Bike Lanes
-  Secondary Signed Bike Lanes



Implementation Summary

The Elizabeth Park Recreation and Open Space Refresh implementation plan has been phased so that the Town has the option to develop large or small projects as it sees fit. The complete build-out of the development plan is projected to take 3+ years.

	Description	Comments
Phase 1		
	Bike Lanes Primary	safety of children biking to and from school is a high priority
	Central Trail Upgrades	central trail is in need of repair
	Top Pond Park	completes the central link
	Pump Track Park	pump tracks are very popular and the existing playground needs to be replaced
	Elizabeth Park Elementary School Outdoor Classroom	completed by the school
	Wetland Park	completes the central link
Phase 2		
	Bike Lanes Secondary	if the primary bike lanes are successful the secondary lanes can be implemented
	Nature Play Park	park will act as the main playground area for the neighbourhood
	Playground & Skills Park	play equipment should be replaced within the next 3 years
Phase 3		
	Community Passive Park	community gathering can happen at this location
	Skate Park & Multi Sports Court	existing play equipment can remain until it needs to be replaced
	Middle Pond Park	public art engagement can take years
	Linear Bike Park	implement after pump track & playground and Skills Park

TRACT

tractconsulting.com



LEGEND OF IMPROVEMENTS

-  Granular Trail
 -  Steps, number tbc
 -  Footbridge
 -  Seating pod
 -  Picnic table
 -  Pea gravel
 -  Concrete Pavers
 -  Decking w/ built-in seating
 -  Climber (2-5 years)
 -  Climber (5-12 years)
 -  Pedestrian lighting
- 

Elgin Park Redesign

OCTOBER 2023



100 LEMARCHANT RD.
ST. JOHN'S, NL
CANADA A1C 2H2

TEL (709) 738-2500
FAX (709) 738-2499